



RAZORBACK RETROFIT KIT™

WING HINGE HARDWARE REPLACEMENT INSTRUCTIONS



READ THIS DOCUMENT BEFORE INSTALLATION OR USE



PRODUCT REGISTRATION BY THE END USER IS REQUIRED FOR WARRANTY ACTIVATION



WING HINGE HARDWARE REPLACEMENT INSTRUCTIONS

STEP 1

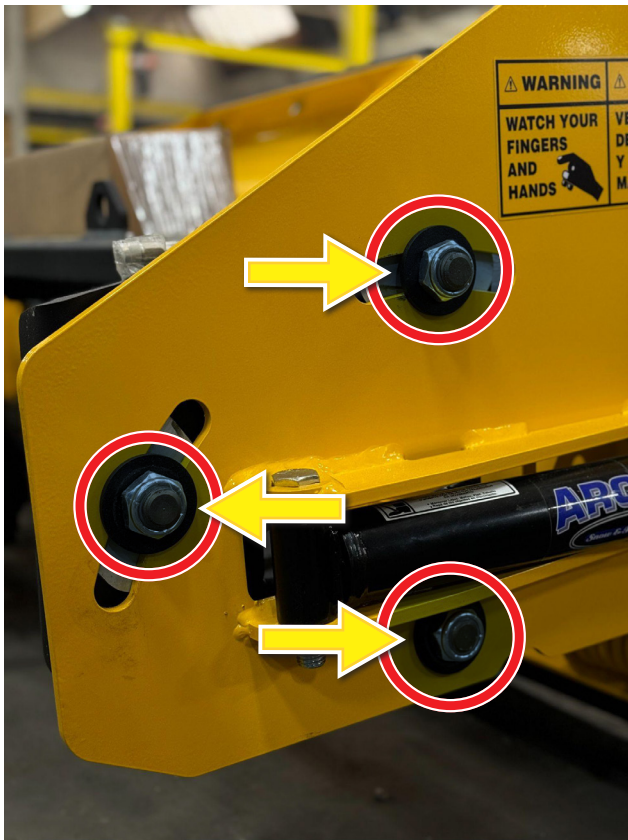
Move the plow to a safe working area, extend both wings all the way forward, and unplug the main electrical harnesses for the plow. This is a safety measure to ensure no one may accidentally move the plow while it is being worked on.

STEP 2

Work on one wing at a time. Locate the 3 large shallow nylock nuts that secure the wing to the frame. One at a time loosen the nut, remove the washer and loosely reinstall the nut.

STEP 3

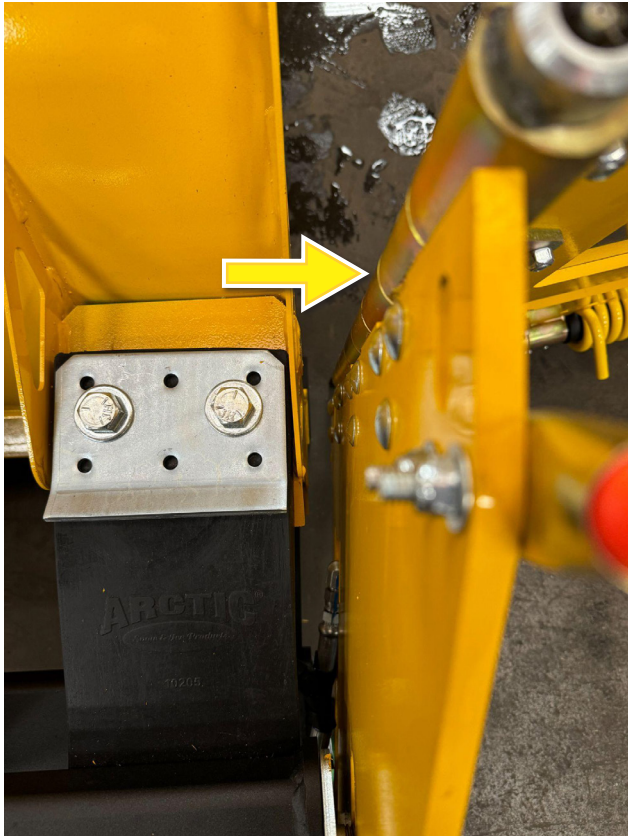
When all washers are removed, but the nuts loosely installed pull the wing away from the frame of the plow until it contacts the remaining nuts. This will provide enough clearance to remove the carriage bolts that would otherwise interfere with the moldboard upon removal.



WING HINGE HARDWARE REPLACEMENT INSTRUCTIONS

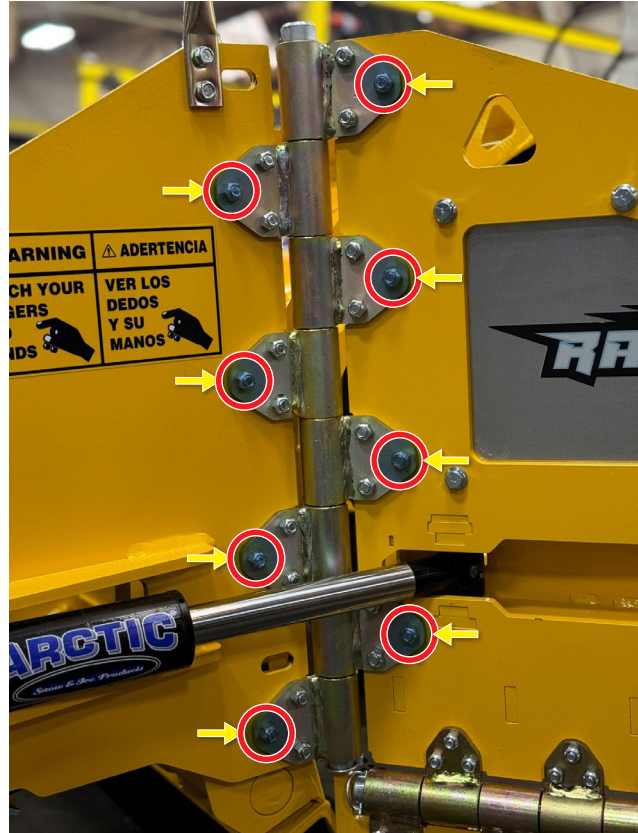
STEP 4

A pinch point has been created by pulling the wing slightly away from the frame. It is recommended to find a sturdy object to keep the wing pulled away from the frame or employ a helper to hold the wing away from the frame.



STEP 5

Locate the 3/8"-16 carriage bolts and lock nuts securing the main wing hinge to the plow. At first, loosen and remove just one of the three bolts and nuts per hinge until each hinge section has only two bolts. This ensures that each hinge stays in place while new hardware is being installed.



WING HINGE HARDWARE REPLACEMENT INSTRUCTIONS

STEP 6

Replace the removed hardware with the new supplied hardware for each hinge section. Torque the new lock nuts to 37 ft-lbs.



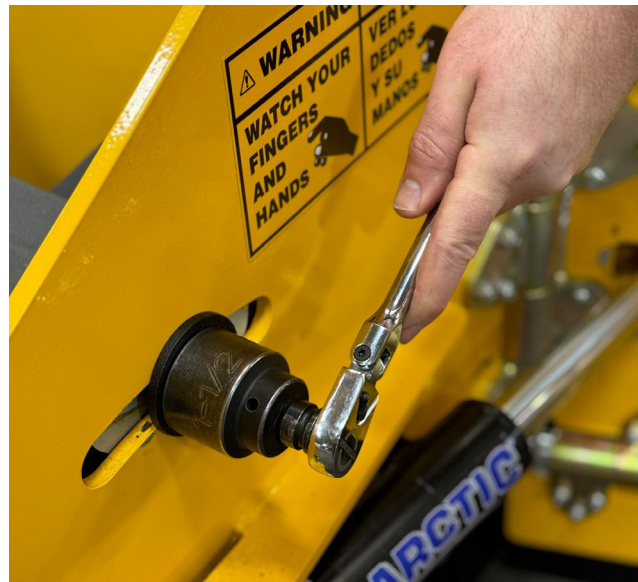
STEP 7

Remove the remaining (old) hardware from each hinge section on the wing hinge and replace with the new supplied hardware. Torque all 3/8" lock nuts to 37 ft-lbs.



STEP 8

Push the wing back against the frame and one at a time replace the washers behind the large shallow nylock nuts. Tighten the nuts until snug and back off slightly ensuring the nylock is engaged, but enough play for the wing to ride up freely.



WING HINGE HARDWARE REPLACEMENT INSTRUCTIONS

STEP 9

Locate the 5/16"-18 carriage bolts and lock nuts securing the trip edge hinge to the wing. On the top of the hinge (hinge sections bolted to the wing) loosen and remove the lower two carriage bolts and lock nuts.



STEP 10

Replace the lower two carriage bolts and lock nuts with the new supplied hardware for each hinge section. Torque the new lock nuts to 22 ft-lbs.

STEP 11

The upper original carriage bolt and lock nut need not be replaced and are held captive by the trip edge.



WING HINGE HARDWARE REPLACEMENT INSTRUCTIONS

STEP 12

Locate the 5/16"-18 carriage bolts and lock nuts securing the trip edge hinge to the trip edge. On the bottom of the hinge (hinge sections bolted to the trip edge) loosen and remove just one of the three bolts and nuts per hinge until each hinge section has only two bolts.



STEP 13

Replace the removed hardware with the new supplied hardware for each hinge section. Torque the new lock nuts to 22 ft-lbs.

STEP 14

Remove the remaining (old) hardware from each hinge section on the trip edge and replace with the new supplied hardware. Torque the new lock nut to 22 ft-lbs.

STEP 15

Repeat steps 2-14 on the other wing.

STEP 16

Hardware replacement complete.



WARNING

**PLOW IS NOT TO BE OPERATED IN TRANSPORT MODE.
OPERATING IN TRANSPORT MODE CAN RESULT IN
PRODUCT DAMAGE AND POTENTIAL INJURY/DEATH.**

